

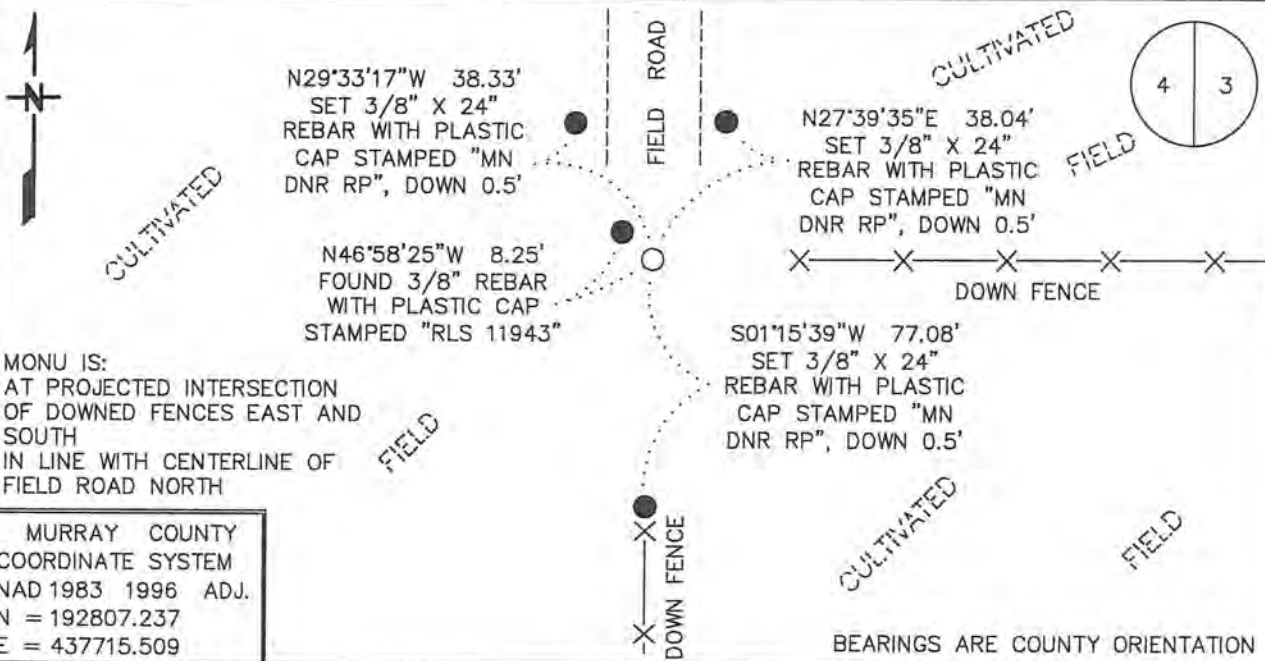
CERTIFICATE OF LOCATION OF GOVERNMENT CORNER

EAST QUARTER Corner of Section 4, Township 107 N, Range 43 W

5TH Principal Meridian, State of Minnesota, County of MURRAY

At the corner location shown on the sketch:

- On _____ found a _____
- left monument as found, lowered monument, removed monument (explain)
- On 11/1/16 Placed a 3/4" X 24" REBAR WITH PLASTIC CAP STAMPED
"MN DNR LS 17003", DOWN 1.3'



MONU IS:
AT PROJECTED INTERSECTION
OF DOWNED FENCES EAST AND
SOUTH
IN LINE WITH CENTERLINE OF
FIELD ROAD NORTH

MURRAY COUNTY
COORDINATE SYSTEM
NAD 1983 1996 ADJ.
N = 192807.237
E = 437715.509

Statement of evidence for this corner location is on back of this page. FEBRUARY 2017 WMA00754

I hereby certify that this plan, specification, or report was prepared by me or under my direct supervision and that I am a duly Licensed Land Surveyor under the laws of the State of Minnesota.

SIGNATURE Bruce W. Shepperd DATE 10/9/17 License Number 17003
BRUCE W. SHEPPERD

East Quarter Corner of Section 4, Township 107 North, Range 43 West
Page 1 of 2

The DNR Division of Lands and Minerals contacted the following for survey information:

Website - mngeo.state.mn.us for GLO plat and field notes

Website - murray-countymn.com for section and quarter section corner information

Murray County Recorder's Office

Bueltel-Moseng Land Surveying, Inc. of Marshall

Westwood Multi-Disciplined Surveying & Engineering of Eden Prairie

- 1866 U.S. General Land Office notes, obtained from mngeo.state.mn.us, show the corner marked with a post, in a mound.
- 1908 Plat Books for Cameron Township, obtained from the County Recorder's Office, show
- 1926 a north-south road and property divisions east and west in the area of the corner.
- 1968 March, the DNR conducted a survey in Section 3 and the field notes state the following about this corner:
corner fence post with fences N-S-E-W
A distance to the corner fence post was not measured, its location was used to establish the E-W $\frac{1}{4}$ line of Section 3.
- 2007 July 5, A Certificate of Location of Government Corner, obtained from the County Recorder's Office, which is also on Website murray-countymn.com, signed by Christopher Moehrl, PE & LS No 40853, shows that a $\frac{1}{2}$ inch rebar was found down 0.2 of a foot at the corner. The following ties are shown to the corner:
in line with the center line of a field road north
in line with a field line west
in line with a fence east
set $\frac{3}{8}$ inch rebar, down 0.5 of a foot, east, 33.20 feet
set PK west side of wood post, up 3.0 feet, southeast, 18.57 feet
set PK west side of wood post, up 3.0 feet, southeast, 52.87 feet
- 2016 November 1, the DNR Division of Lands and Minerals found a $\frac{3}{8}$ inch diameter rebar with a plastic cap stamped 11943 in the area of the corner. Also, located the projected intersection of a fence east, a fence south and the center line of a field road north and found it to be:
6 feet south and 6 feet east of the found rebar
- Searched for but found no evidence of the record ties.

East Quarter Corner of Section 4, Township 107 North, Range 43 West
Page 2 of 2

Then a 8 foot east-west by 8 foot north-south by 2 feet deep hole was dug with a backhoe the center being the projected intersection of a fence east, a fence south and the center line of a field road north, but no evidence of a monument was found.

Set a $\frac{3}{4}$ inch by 24 inch rebar with a plastic cap stamped "MN DNR LS 17003" at the projected intersection of a fence east, a fence south and the center line of a field road north and found it to be;

- a) 5.63 feet south and 6.03 feet east of the found rebar with plastic cap stamped 11943
- b) 2633.79 feet from the southeast corner of Section 4/northeast corner of Section 9
- c) 2658.35 feet from the northeast corner of Section 4
- d) 7.20 feet east of a straight line between adjoining section corners

Analysis of the above information led the DNR Division of Lands and Minerals to conclude that the $\frac{3}{4}$ inch by 24 inch rebar with a plastic cap stamped "MN DNR LS 17003" set at the projected intersection of a fence east, a fence south and the center line of a field road north marks the obliterated position of the corner.